

# S9 base

100-250 HP

Ø max. 9 cm [3.5 inch]

## Heavy duty flail mulcher with reversible linkage

The S9 series machines mulch grass, vegetation and prunings up to 9 cm [3.5"] in diameter. The adjustable rear hood allows you to alter the degree of mulching.

The **S9 base** has a central 3-point linkage. The mulcher is reversible and can be driven in both direction - front and rear.

You can get this model also with motor - ready to go with a hydraulic track loader!

## Standard version and characteristics

- > Mulches grass and brush up to 9 cm [3.5"]Ø
- > Working speed 3-10 km/h
- > 3 point linkage cat. 2 reversible
- > 1000 rpm gearbox with freewheel and through shaft
- > Belt transmission
- > Adjustable rear hood with rubber protection
- > Front protection with chains
- > Support roller 193 mm Ø
- > Rotor with SMO flails

## Optional configuration and accessories

- > 540 rpm gearbox
- > Gearbox with automatic inverter and double freewheel
- > Additional 3-point linkage
- > Front attachment
- > Belt cover on the right (working left)
- > Additional front rubber flap
- > Roller scraper
- > Rubber wheels instead of roller
- > Linkage for for hydraulic track loader / slope groomer and transmission with 80 cm<sup>3</sup> motor (available for models 225-300)
- > Attachments for undercanopy maintenance (details see separate brochure)



[www.youtube.com/seppimulcher](https://www.youtube.com/seppimulcher)

## Tools



Specifications · S9 base		Nominal tractor power 100-250 HP				
Working width	cm [inch]	200 [79]	225 [89]	250 [98]	275 [108]	300 [118]
Overall width	cm [inch]	215 [85]	240 [95]	265 [100]	290 [114]	315 [124]
Depth	cm [inch]	117 [46]	117 [46]	117 [46]	117 [46]	117 [46]
Height	cm [inch]	116 [46]	116 [46]	116 [46]	116 [46]	116 [46]
Weight · base value	kg [lb]	870 [1,918]	940 [2,072]	1.010 [2,227]	1.090 [2,403]	1.170 [2,579]
Belts	qty	5	5	5	5	5
Flails	qty	21	24	27	27	30

### S9 base · features

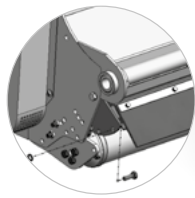
Strong and robust casing made of high-tensile steel, with replaceable wear plates.



Strong welded belt cover minimizes accidental damage



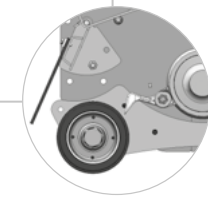
Gearbox for front and rear attachment



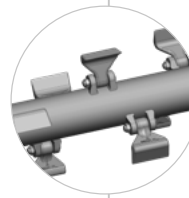
Adjustable hood to set the degree of mulching



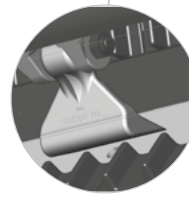
Strong roller with double tapered bearing unit for a long life, the large diameter improves mulching on uneven ground.



Due to the close position of the roller to the rotor, the rotating flails clean the roller, and the cut material is evenly distributed over the top.



Rotor with SMW flails  
Low power consumption at maximum throughput with helix rotor technology



Replaceable tempered counter cutters inside the casing provide a perfect result when mulching.

